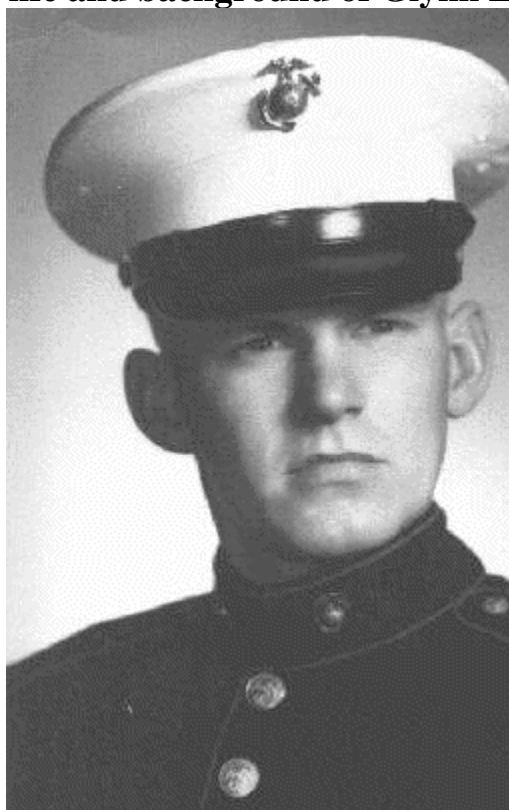


This is only a glimpse at the life and background of Glynn E. “Buck“ Rogers Sr. K4ABT



Once a U S (Para-Marines, special forces) MARINE... always a U S Marine! ... Photo, 1950

Greetings From One of the CQ Gang!



**SERVING THE
ACTIVE HAM
SINCE 1945**

PACKET RADIO EDITOR

K4ABT

**Buck Rogers
211 Luenburg Dr., Evington, VA 24550
CQ Zone 5 • Campbell County**

CONFIRMING 2-WAY QSO

PSE QSL TNX

CALL	DATE			UTC	BAND	MODE	RST	RIG, PWR., ANT.
	DAY	MONTH	YEAR					

A W4MPY QSL



ERICSSON 

G.E. "Buck" Rogers, Sr. K4ABT
Senior Systems Engineer

Ericsson Inc.
Customer Center
Mountain View Road
Lynchburg, VA 24502

Telephone: (804)
FAX: (804)
E-Mail: k4abt@sedan.org
or BuckK4ABT@inmind.com

Welcome to the world of Broadcast Radio & Television! This Page is dedicated to the many people who in some way, affected my life. To the persons I've named below, and many others that I'll add later, I'm dedicating these memories.

Lora Jane Rogers; Jean Ann Dyson; Ruby & Victor Dyson; Sgt E. V. Tipton (USMC); Col O. F. Petross (USMC); Gen Randolph McCall Pate (USMC); Al Renfro AETV ; Cason Capps; Paul Gross; Riley Clark; Hinton Strickland; Martin Morris; Tyril Johns; Edward Elkins; Bob Canup; Jack Kennemer; Dan Bynum; Robert Martin; James Runyan; Marshall Wiggins; J W Davis; Charles Woods; Jack Verner; Gene Wright; Gary Kaufman; Richard Darga; Blair Weston; Bob Schoenfeld; Byron Lindsey; Mel Weiss; Walt Snead; Robert Roacha; William Jennings Bryan Smith; John Tyler; Al Flanagan; Bob Orso; Dan Bowlen; Gale Caudle; Alan Dorhoffer; Dick Ross; Tommy Ack; Johnny Fearon; Dan Davis; Josh Marks; Sonny Strawn; Tim Wilson; Bob Slomka; Frank Herring; Edwin Graham;

Yes, there are cold winters in Alabama. In the late sixties, a cold winter in Alabama atop Cheaha Mountain where I was then; Chief Engineer of channel 7. In the photos shown here, the tower is loaded with ice. Another ice storm 11 years later, took this tower down. NOTE in top right photo, the tower is "bowed" from the ice load!



In 1969 I become Director of Engineering of Channel 11 Atlanta. We begin making changes by installing a new Traveling Wave Antenna. With the help of a high-tech staff of engineers, we upgraded the Channel 11 Studios and Transmitting facilities to state-of-the-art.

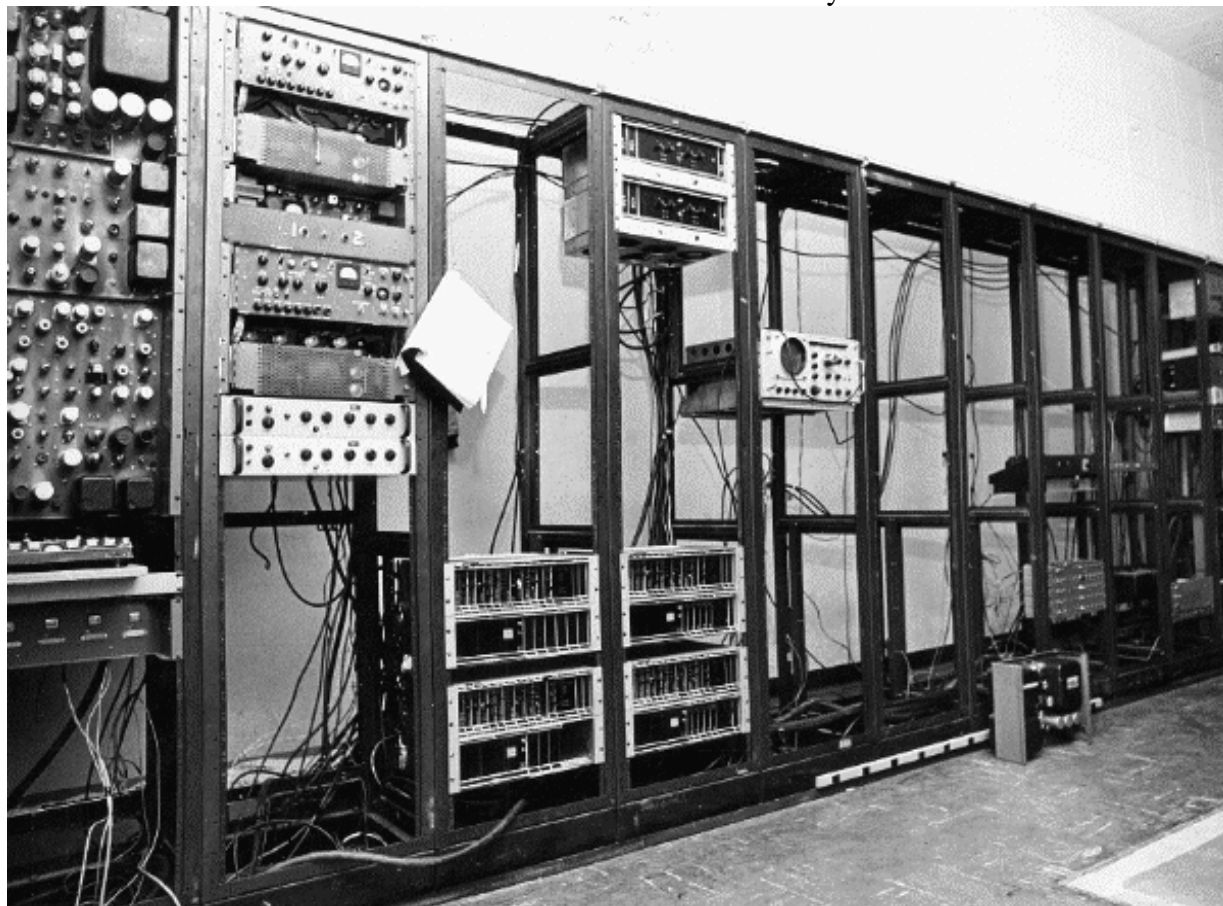


Change is what progress is about! Never stand still, and never look back!

The new antenna goes up! Now that's a "winch"! The Antenna weighs 18 tons!



Master Control 1969 & Master Control a year later



1969, BEFORE



Master Control, Channel 11 WXIA TV, Atlanta, 1969 After

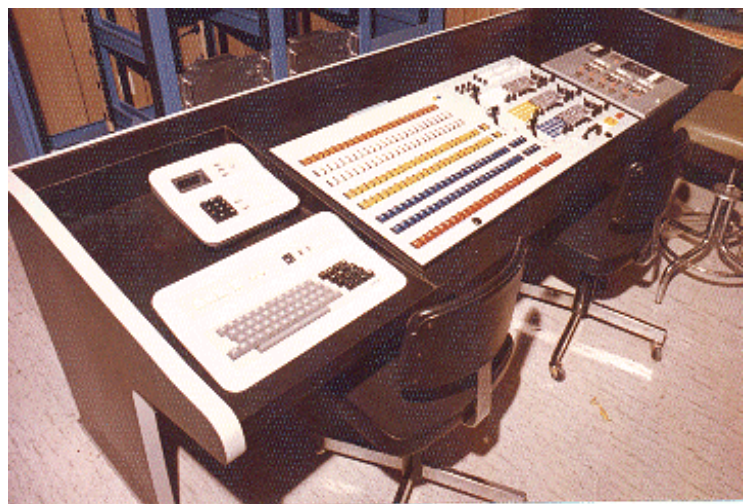


Studio Control 1969

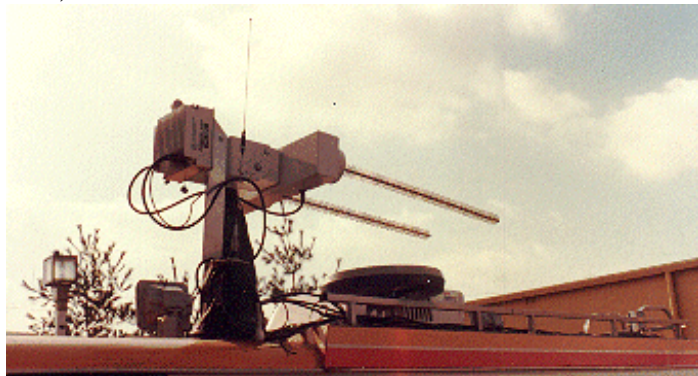


& Studio Control one year later.

A new audio console and Video switcher is added 1972.



Eleven Alive, comes ALIVE! With ENG and Weather RADAR in 1972.



Byron Lindsey, George Beard, & Riley Clark were there when they delivered a new antenna in 1958
(WATL/WQXI/WXIA-TV)



~~~~~

•

In 1979 I become VP & Director of Engineering of the Woods Broadcasting Co. Changes begin at both the transmitter site at Miller Crossroads near Bonifay, Florida and at the Studios at Dothan, Alabama. The boss wanted the best signal on the Gulf Coast, so with that in mind and with the help of a dedicated engineering staff I began the upgrade of the TV & FM Stations to state-of-the-art.

|               |                      |
|---------------|----------------------|
| WTVY-TV Ch 4  | Dothan, AL - CBS     |
| WTVW-TV Ch 7  | Evansville, IN - ABC |
| KLBB-TV Ch 13 | Lubbock, TX - CBS    |
| KTXS-TV Ch 12 | Abilene, TX - ABC    |
| WTVY-FM 95.5  | Dothan, AL - CBS     |

**GLYNN ROGERS, SR.**  
*Vice Pres. Engineering*

Dothan, AL 36302      Telephone  
 (205) 792

---

|                                                               |                                        |
|---------------------------------------------------------------|----------------------------------------|
| <b>THE<br/>BIG<br/>4<br/>WTVY<br/>CBS</b>                     | <b>fm 95<br/>WTVY</b>                  |
| <b>Glynn E. Rogers, Sr.</b><br><i>Director of Engineering</i> | Dothan, Alabama 36302<br>Phone 205/792 |

The first order of business; UPGRADE these stations to state-of-the-art!

Want some idea of what more than 2000 feet of steel looks like?

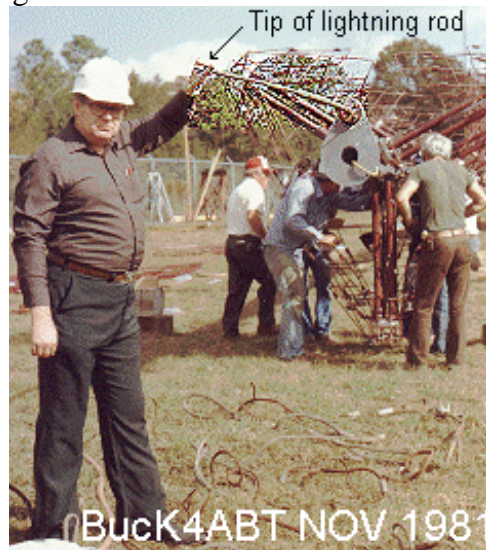


The one "short-com-ming" of this tower is that the elevator only goes to 1989 feet... the rest of the way... we walk UP!

Just a little touch-up on the tuning plates... and it's ready to go UP! Buck, Sr VP & DE



Ever see a 12 foot lightning rod? It's 3 inches diameter at the base.  
It will get a lotta hits at over 2000 feet... in Florida.



Sixteen (16) tons, and whatta ya get? A Digital signal that covers Dixie like the  
Dew! G E "Buck" Rogers Sr; 1981  
With a circularly polarized antenna that we install at over 2000 feet. The  
antenna alone weighs "sixteen tons" (32,000 lbs).



Ever wonder how the tower crew travels up and down the tower???



Whatta you mean you gotta PEE!

---

And we finally begin the "long haul" UP!... very carefully!



We build the new television studios at WTVY in 1979.



---

Live remote broadcasting with Electronic News Gathering (ENG).



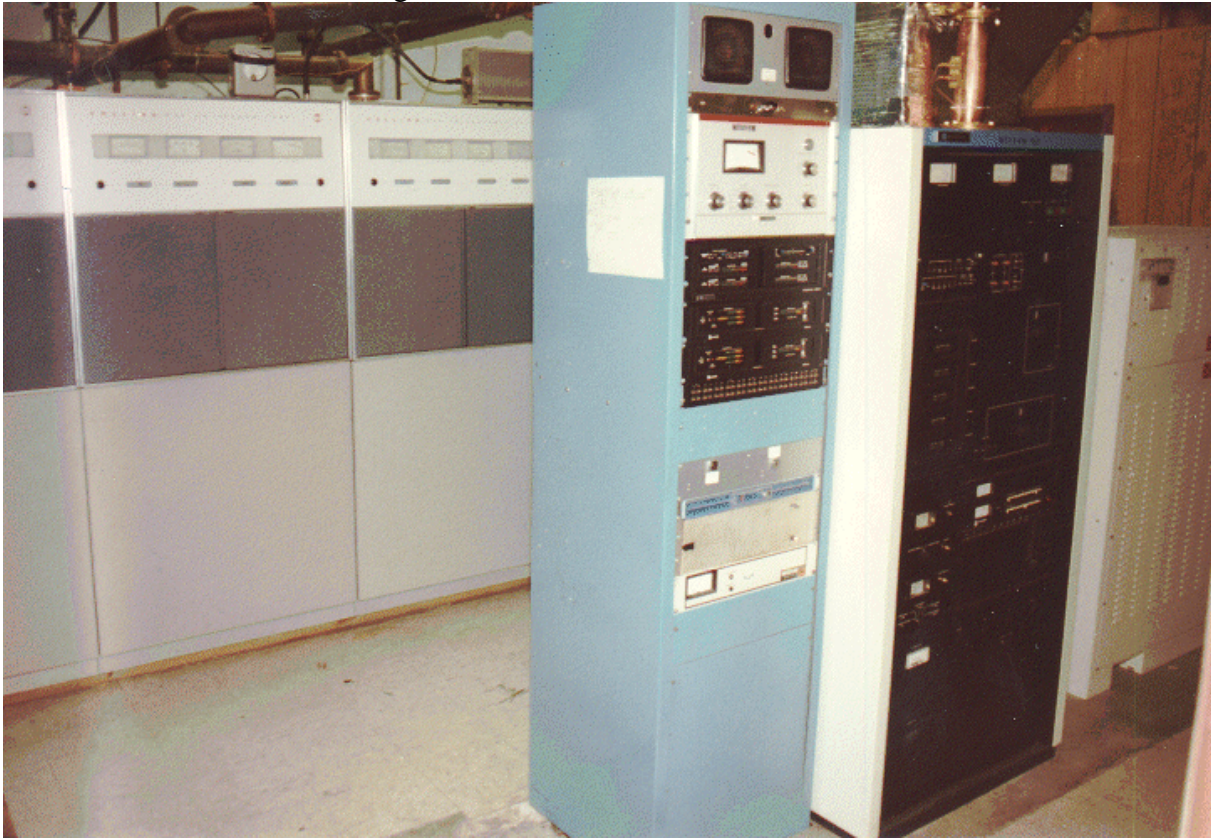
This "LIVE REMOTE" van contains a 10 Kw generator, a pneumatic microwave antenna & mast, 3 TV cameras, and a complete video & audio switching console.. and more.

Thanks to a lot of hard work by Glynn Rogers II.

---

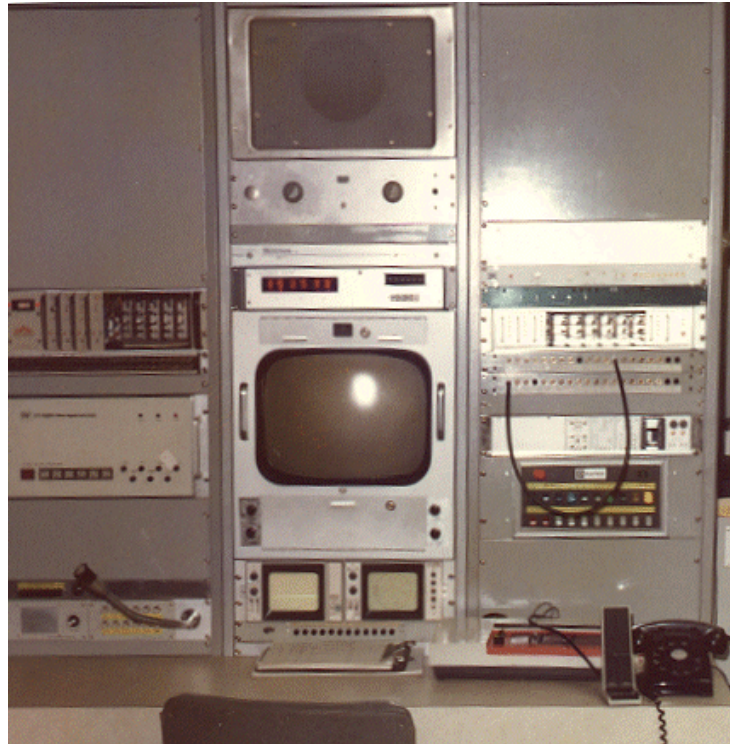


WTVY-FM gets a new 100,000 watt face-lift and antenna.



---

As Television Networks began to use Satellites for their news and network distribution, we began building more and more satellite earth station terminals



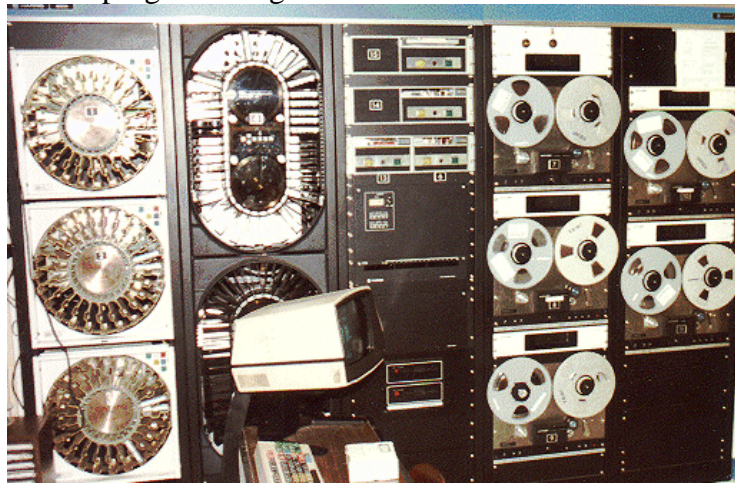
Buck & team put Ted Turner & CNN on the satellite 1973. The first CNN Control Panel

My son, Glynn E. Rogers II and I build a fully automated (WAID) FM station at Clarksdale, MS!



---

Glynn II had fun programming the Harris Automation for the first broadcast.



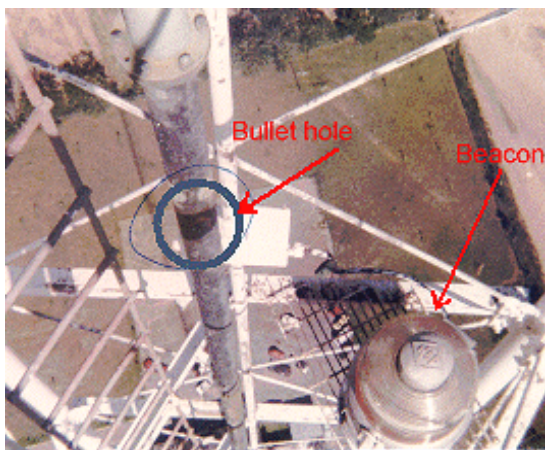
---

After completing this one we wandered off into Texas to do some trouble-shooting atop Kings Mtn, near Sweetwater, TX Did you ever wonder what an automobile looks like from 1800 feet up?





That's my 4WD vehicle at the upper left.... I snapped this photo from 1800 feet...ABOVE.



Found one of the problems... a bullet hole thru the 3 and 1/8 inch transmission line.

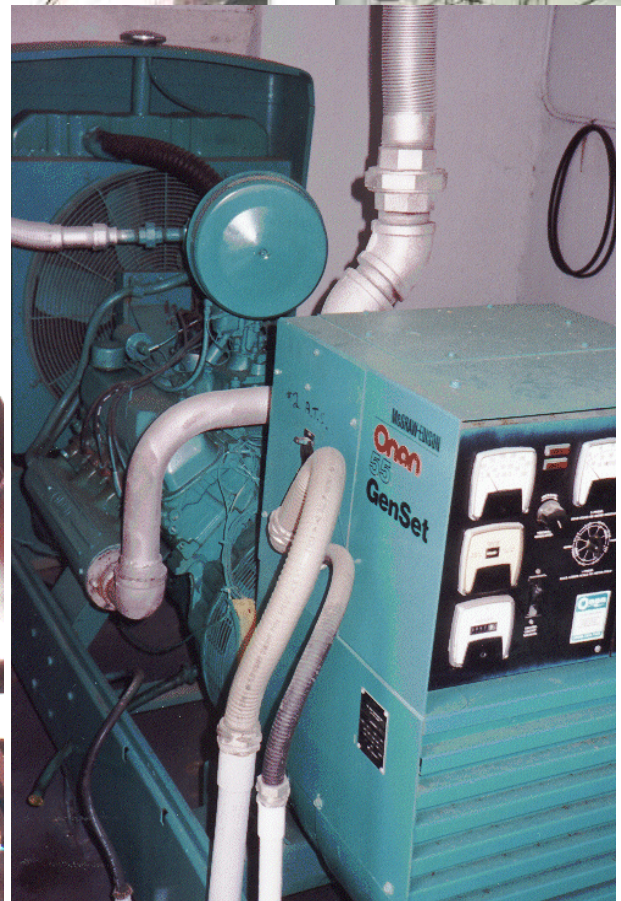
Appears the "vandal" was aiming at the Beacon, and missed! In the early eighties I took some time out to return to college. A middle-aged man in a new society, redirects his career and goals. In the Mid-eighties I really start having fun.. ABOVE 500 Megacycles... whoops, I almost dated myself. I really meant MegaHERTZ.



I began designing microwave backbones, cellular systems, and building hundreds of 800 MHz sites.







~~~~~

Who said my life was boring . . ? 73 de Glynn E. "Buck" Rogers K4ABT