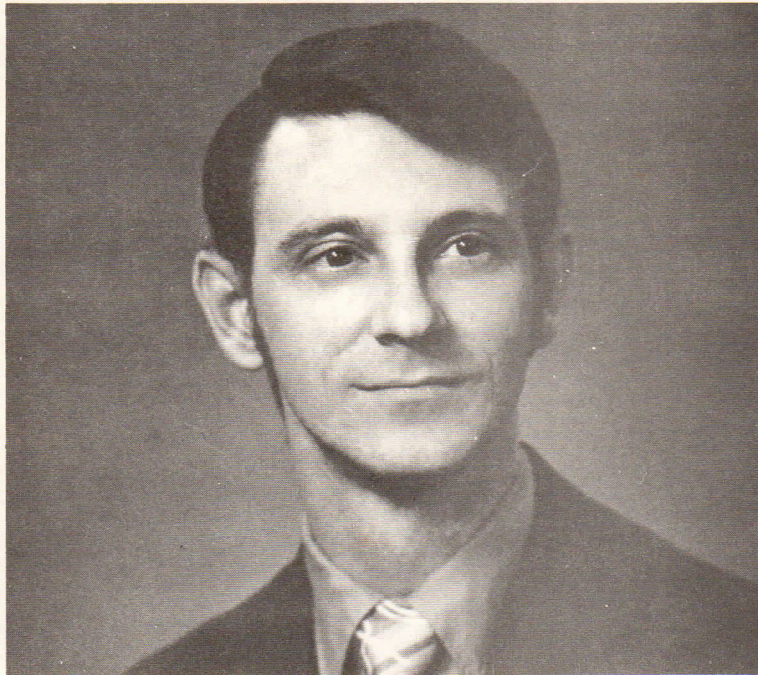


# SERVICE TRAINING

Introducing ...



M. T. ANDERSON

Mel Anderson grew up in Morganton, North Carolina, and received his early training in electronics at Danville (Virginia) Technical Institute. Fresh out of school, he joined General Electric at Lynchburg in 1959.

The first couple of years were spent in production test and troubleshoot of our standard products which, at the time, included Progress Line and TPL. The next year was in the "special mobile" area, working with products which are custom-designed to meet specific customer needs.

Mel transferred to Mobile Equipment Engineering as an engineering technician in 1962. He was part of the engineering teams which designed MASTR-Professional Series, MASTR-Executive Series, and also our motorcycle radio. He served as our primary motorcycle "pilot" during the motorcycle radio design program.

Promoted to Electronic Technical Specialist in 1965, most of his activities were in the system and control field. He designed the remote control circuits in the MASTR-Executive Series base station. He holds a patent for the audio switch used in the relayless remote control circuit of our MASTR-Royal Executive Series base station.

Mel moved to Mobile Product Service in mid-1971. He worked with SPAR, our computerized system for recommended parts stocking, and helped field the many reports and information requests which come from our field organization. Several special training assignments disclosed an aptitude for teaching which he now puts to good use in his current assignment in Service Training.

Mel holds an FCC 1st Class 'phone license and Amateur Radio call K4IUS. His hobbies include water skiing and private flying.