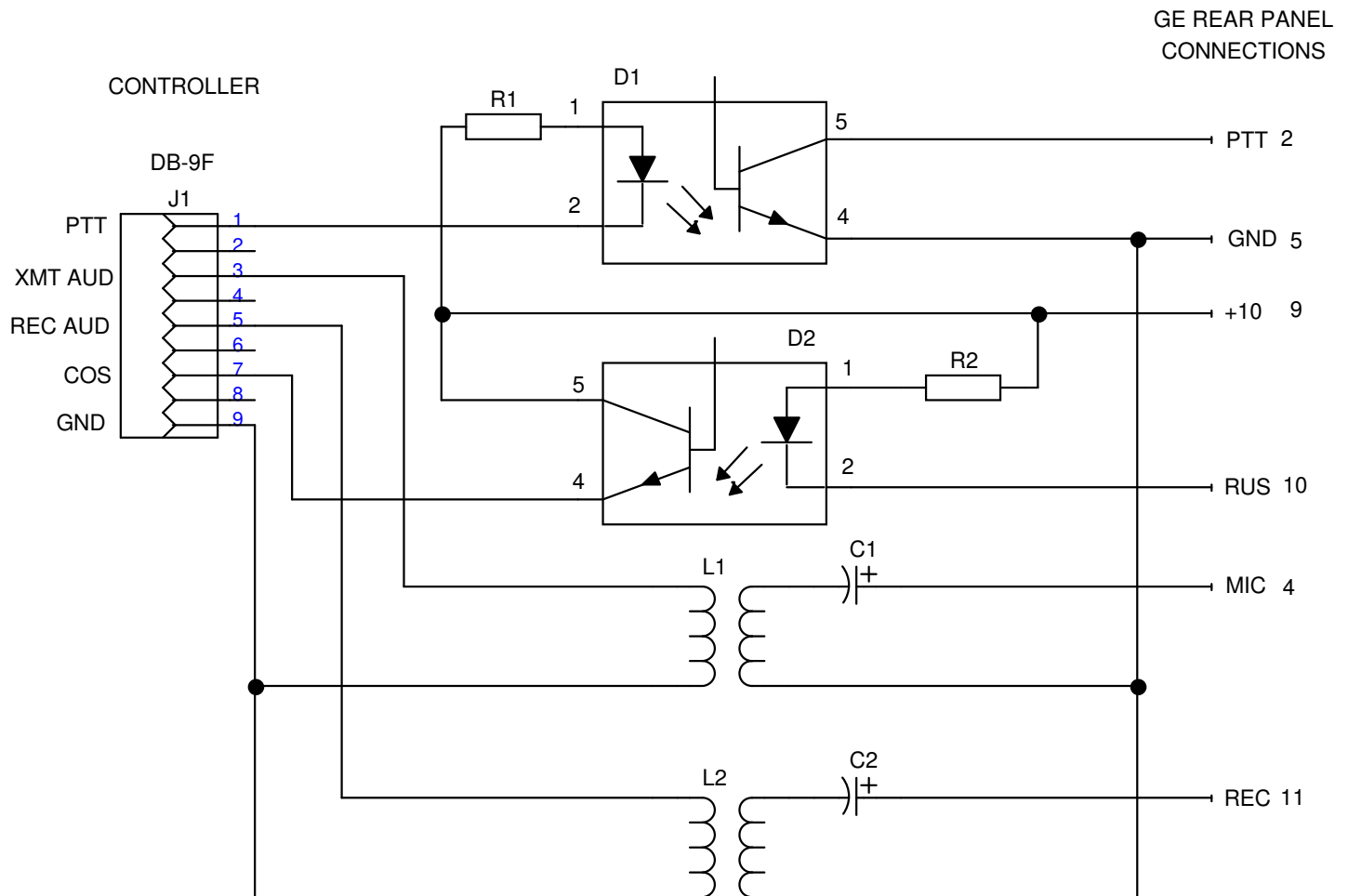


PSE 508 Interface to an External Controller



Note: RUS signal taken from PSE508 Q6 Collector

REC Audio is taken from PSE508 Test Header Pin 4

Match controller connections to pin functions on J1

Modify PSE 508 as described in documentation

R1, R2 6.8K 1/4 W

L-1, L-2 600:600
TRANSFORMER

D1, D2 4N36

C1, C2 3.3 uF 25V