

MASTR II FREQUENCY CONTROL UNIT



DESCRIPTION

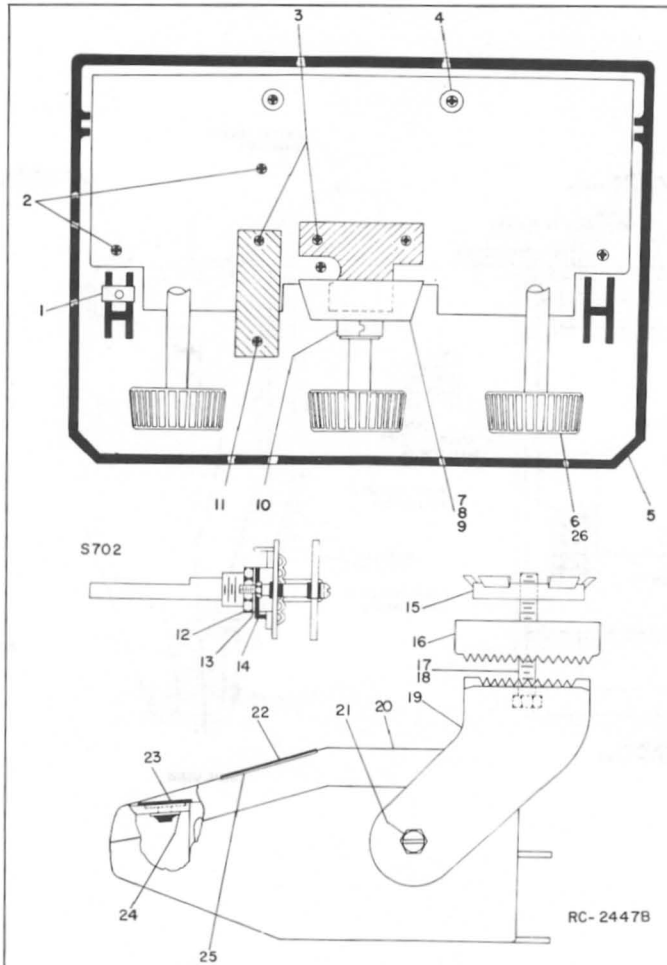
MASTR II Control Units are attractively styled, highly functional units that are enclosed in a two-piece molded Lexan® housing for durability and ease of disassembly. The Control Units are mounted to the vehicle with a Safety Release Lexan® mounting bracket assembly for passenger safety.

ONE - THRU EIGHT FREQUENCY CONTROL UNIT

Control Unit (Common Kit)	19A129576G1
One-Frequency Kit	19A129577G1
or	
One thru Eight Frequency Kit	19A129578G1

ONE - 12 FREQUENCY CONTROL UNIT

Control Unit (Common Kit)	19A129576G1
One-thru 12-Frequency Kit	19A129578G2



SYMBOL	GE PART NO.	DESCRIPTION
MECHANICAL PARTS (SEE RC-2447)		
1	19A116807P1	Clip, spring tension.
2	19A116773P106	Tap screw: thd size No. 7-19 x 3/8.
3	19B201074P204	Tap screw, Phillips POZIDRIV : No. 4-40 x 1/4.
4	N402P8C6	Washer: No. 8.
5	19C320389G1	Housing.
6	19B219825G1	Knob.
7	19C320175P1	Frequency indicator.
8	NP27075A	Nameplate. (1-12)
9	NP270754B	Nameplate. (OFF, A-H).
10	4029006P1	Retainer strap: sim to Tinnerman C2386-020-1.
11	M117P9004C6	Tap screw: No. 4-40 x 1/4.
12	7141225P2	Hex nut: No. 4-40.
13	N404P11C6	Lockwasher, internal tooth: No. 4.
14	19A134017P1	Adjustable stop.
15	19B219578G1	Safety release disc.
16	19C320022P1	Retaining bracket.
17	N187P16010C6	Screw, hexhead, slotted: No. 10-32 x 5/8. (Quantity 1, used with safety release disc and retaining bracket).
18	N710P16012C6	Screw, hexhead, slotted: No. 10-16 x 3/4. (Quantity 3, used without safety release disc and retaining bracket).
19	19D416594P1	Mounting bracket.
20	19E500988P1	Cover.
21	19A116985P1	Tap screw, assembled washer: No. 13-16 x 3/4 with No. 10 hexhead.
22	NP270753P1	Nameplate. (MASTR II SOLID STATE).
23	19B219626P1	Knob plug. (Frequency switch 3702).
24	7140578P4	Nut, push on: sim to Tinnerman C1259-014-27. (Used with item 23).
25	19A130009P1	Diffuser.
26	7160815P4	Washer, spring: sim to Shakeproof 3544-14-00.
----- CABLES -----		
	19D423424G14	Power Control Cable - 38 Conductor
	19D423424G8	Power Control Cable - 30 Conductor
----- ANTENNAS -----		
	7491074P1	25 - 50 MHz
	19B209568P1	132 - 512 MHz